

Information om SolidWorks

(For information in English, please see below.)

SolidWorks är populär programvara för CAD (datorstöd konstruktion). Programvaran finns i en licensversion avsedd för studenter, en licensversion avsedd för undervisning, en licensversion avsedd för forskning och en kommersiell licensversion för all annan användning. Alla dessa licensversioner förekommer samtidigt på Lunds universitet, och licenserna finansieras av de verksamheter som använder programmet.

Priserna och villkoren skiljer sig kraftigt mellan de olika licensversionerna. **Det är viktigt att använda rätt licensversion för rätt användningsområde för att vara rätt licensierad och följa upphovsrättshavarens (programvarutillverkarens) licensvillkor.** De följande tabellerna i detta dokument illustrerar skillnader mellan licensvillkoren för undervisningsversionen, forskningsversionen och den kommersiella versionen och när respektive version ska användas.

Tabellerna visar till exempel att för all forskning men även vissa typer av examensarbeten, publika miljöer eller vissa labb får den kraftigt rabatterade undervisningsversionen inte användas. För dessa användningsfall krävs forskningsversionen eller rentav den kommersiella versionen. Priserna för forskningsversionen börjar på ca 19 000 kr per år och användare. Den kommersiella versionen kostar ännu mer.

Behöver du köpa in rätt licens för att täcka era behov av SolidWorks inom din verksamhet kan du kontakta servicedesk@lu.se för hjälp.

Om användningen av SolidWorks inte omfattas av undervisningsversionen eller forskningsversionen ovan, och inköp av dyrare licens (forskningslicens eller kommersiell licens) inte bedöms vara aktuellt för din verksamhet, **ska programvaran omgående avinstalleras.**

Kontakta servicedesk@lu.se vid eventuella frågor kring detta.

Länkar:

- SOLIDWORKS Education Edition License and Subscription Service Agreement: https://www.solidworks.com/sw/docs/EDU_EULA_EducationEdition_ENG.pdf
- SOLIDWORKS Research License FAQ: https://www.solidworks.com/sites/default/files/2017-12/3DS-2015-SWK-EDU-WhichEditionFAQ-Flyer_0.pdf

Denna text bygger på ett ställningstagande från [SamIT](#). Föredragande i ärendet har varit Programförmedlingen.

Information about SolidWorks

SolidWorks is a popular CAD (Computer Aided Design) software. The software is available in a license version intended for students, a license version intended for teaching, a license version intended for research, and a commercial license version for all other uses. All these license versions exist simultaneously at Lund University, and the licenses are financed by the organizations that use the software.

The prices and conditions differ greatly between the different license versions. **It is important to use the right license version for the right use in order to be properly licensed and comply with the copyright holder's (software manufacturer's) license terms and conditions.** The following tables in this document illustrate the differences between the educational, research, and commercial license terms, and when each version should be used.

The tables show, for example, that for all research but also certain types of degree projects, public environments or certain labs, the heavily discounted teaching version may not be used. For these use cases, the research version or even the commercial version is required. Prices for the research version start at approximately SEK 19,000 per year and user. The commercial version costs even more.

If you need to purchase the right license to cover your SolidWorks needs within your organization, you can contact servicedesk@lu.se for help.

If the use of SolidWorks is not covered by the educational version or the research version above, and the purchase of a more expensive license (research license or commercial license) is not deemed appropriate for your organization, **the software must be immediately uninstalled.**

Please contact servicedesk@lu.se if you have any questions about this.

Links:

- SOLIDWORKS Education Edition License and Subscription Service Agreement: https://www.solidworks.com/sw/docs/EDU_EULA_EducationEdition_ENG.pdf
- SOLIDWORKS Research License FAQ: https://www.solidworks.com/sites/default/files/2017-12/3DS-2015-SWK-EDU-WhichEditionFAQ-Flyer_0.pdf

This text is based on a position taken by [SamIT](#). The rapporteur in the matter has been Programförmedlingen.

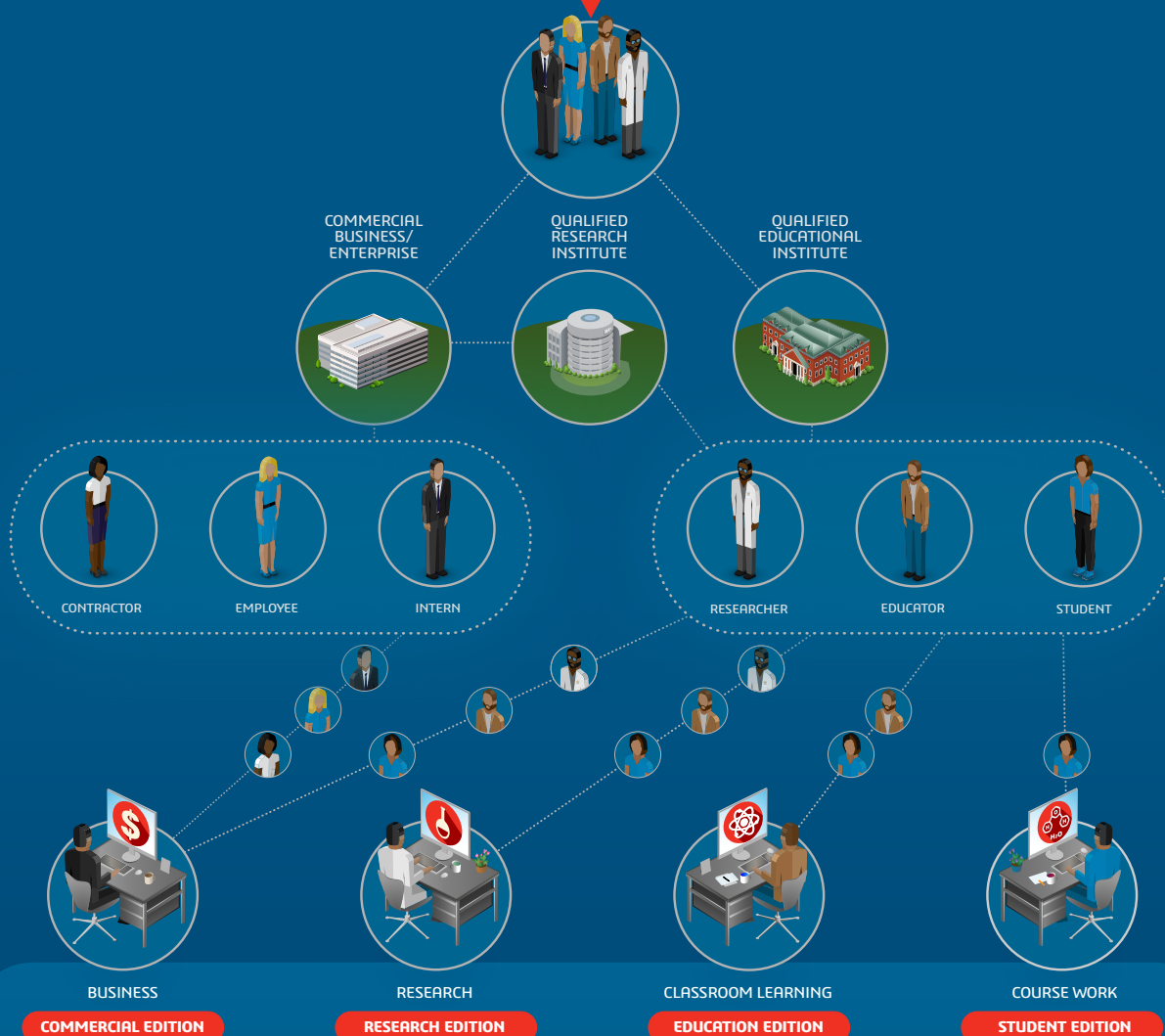
SOLIDWORKS RESEARCH LICENSE ELIGIBILITY REQUIREMENTS

ACTIVITY	SOLIDWORKS EDUCATION EDITION	SOLIDWORKS RESEARCH	SOLIDWORKS COMMERCIAL
Secondary school projects (K-12)	•		
Undergraduate capstone projects	•		
Undergraduate research projects – unpaid, for degree	•		
Graduate student projects – non-funded, no deliverables	•		
Curriculum development (for internal use only)	•		
Undergraduate research projects – paid or generating IP		•	
Graduate student projects – funded with deliverables		•	
University research labs (labs operated within a specific department of a university)		•	
Joint/cooperative institutes (licenses must be owned and operated by a university)		•	
Academic consortiums (for academic use only)		•	
Academic non-profits (no commercial interactions)		•	
Curriculum development – open source sharing		•	
Research labs - private or government ownership			•
National Laboratories (FFRDCs)			•
Fab Labs / Hobby Centers			•
Tech transfer programs/Knowledge Transfer Partnerships (KTP)			•
Industry consortiums			•
Commercial non-profits			•
Spinoff/Startup companies			•
Individual consulting			•
Hardware/product development - for resale			•
Curriculum development – for resale			•






For additional questions, please email us at SOLIDWORKS.Research.

SOLIDWORKS RESEARCH LICENSE FAQ

WHICH SOLIDWORKS EDITION DO I NEED?



IF YOU ARE:

-  Employed by a Commercial Business or Enterprise.....
-  Working for a Commercial Business or Enterprise, in an Academic Setting.....
-  Performing Research Funded by External Sources.....
-  Student/Faculty Using SW for Personal Learning or Academic Purposes.....
-  A Student Using the Software to Complete Assigned Course Work.....

THEN YOU NEED:

- SOLIDWORKS COMMERCIAL EDITION**
- SOLIDWORKS COMMERCIAL EDITION**
- SOLIDWORKS RESEARCH EDITION**
- SOLIDWORKS EDUCATION EDITION**
- SOLIDWORKS STUDENT EDITION**

What is a Qualified Research Institution?

Qualified Research Institution - A college, university, research laboratory, teaching hospital, non-profit or consortium. Qualified Research Institutions do not include for-profit companies, for-profit research centers, technology incubators, accelerators, non-profit learning centers, museums, public libraries, outreach programs, Fab Labs, maker spaces, hacker spaces or hobby centers.

Can I just use a SOLIDWORKS Education Edition for my Research?

The SOLIDWORKS® Education Edition is ONLY for classroom or laboratory instruction of Qualified Students, or instruction and preparation of courses by Qualified Instructor and cannot be used for Research purposes. Educational Purposes do not include Research Purposes, Commercial Purposes, or Curriculum Development by commercial curriculum developers.

I am a Qualified Researcher at a Qualified Research Institution and am looking to do a side project on my own for commercial purposes. Do I qualify for a Research License?

No, you do not. A Research License can never be used for Commercial Purposes.

I qualify for a Research License. When I leave the research group and move to a different university or location, can I take my Research License with me?

No, you cannot take a license with you. The Research License is purchased through your university and therefore it is the university's license. Furthermore, the Research License shall be installed/managed only on computers owned or leased by the Qualified Researcher or Qualified Research Institution.

I would like to provide training for the public on campus. Do I qualify for a Research License?

No, you do not. A Research License can never be used for Training Purposes provided to the public even if it is done on campus. You can train students, but not the general public.

RESEARCH LICENSE BENEFITS

- **NO Restrictions** – Enjoy full use without restriction for publications, industry funded projects, IP Transfer, and patent applications
- **NO Educational Watermarks** – No EDU Watermarks are inserted that interfere with IP, license agreements, and spin-offs
- **FULL SolidWorks Compatibility** – Compatibility with the Commercial Version of SolidWorks
- **REDUCED Pricing** – Special pricing means substantial savings over commercial rates, preserving more of your grant award

ADDITIONAL INFORMATION

Educational Purpose - Classroom or laboratory learning by Qualified Students or instruction or preparation of courses by Qualified Instructors. Educational Purposes may also include Capstone or other student projects if the work is non-proprietary, does not create or transfer Intellectual Property and the results will become part of the public domain. Educational Purposes do not include Research Purposes, Commercial Purposes or Curriculum Development.

Research Purpose – Any work where SOLIDWORKS directly contributes to the problem statement, modeling, analysis, outcome or deliverables of a Research Project. Research Purposes do not include Commercial Purposes or Curriculum Development.

Commercial Purpose – Professional consulting, hardware production for resale, job shop activities, services performed under a Technical Services Agreement, corporate or government internships, private tutoring or training of anyone other than Qualified Students.

Our 3DEXPERIENCE® platform powers our brand applications, serving 12 industries, and provides a rich portfolio of industry solution experiences.

Dassault Systèmes, the 3DEXPERIENCE® Company, provides business and people with virtual universes to imagine sustainable innovations. Its world-leading solutions transform the way products are designed, produced, and supported. Dassault Systèmes' collaborative solutions foster social innovation, expanding possibilities for the virtual world to improve the real world. The group brings value to over 190,000 customers of all sizes in all industries in more than 140 countries. For more information, visit www.3ds.com.



3DEXPERIENCE®

Eligibility for Research licenses

- Undergraduate research projects – paid or generating IP
- Graduate student projects – funded with deliverables
- University research labs
(labs operated within a specific department of a university)
- Joint/cooperative institutes
(licenses must be owned and operated by a university)
- Academic consortiums (for academic use only)
- Academic non-profits (no commercial interactions)
- Curriculum development – open source sharing

SOLIDWORKS RESEARCH LICENSE ELIGIBILITY REQUIREMENTS

ACTIVITY	SOLIDWORKS EDUCATION EDITION	SOLIDWORKS RESEARCH	SOLIDWORKS COMMERCIAL
Secondary school projects (K-12)	•		
Undergraduate capstone projects	•		
Undergraduate research projects – unpaid, for degree	•		
Graduate student projects – non-funded, no deliverables	•		
Curriculum development (for internal use only)	•		
Undergraduate research projects – paid or generating IP		•	
Graduate student projects – funded with deliverables		•	
University research labs (labs operated within a specific department of a university)		•	
Joint/cooperative institutes (licenses must be owned and operated by a university)		•	
Academic consortiums (for academic use only)		•	
Academic non-profits (no commercial interactions)		•	
Curriculum development – open source sharing		•	
Research labs - private or government ownership			•
National Laboratories (FFRDCs)			•
Fab Labs / Hobby Centers			•
Tech transfer programs/Knowledge Transfer Partnerships (KTP)			•
Industry consortiums			•
Commercial non-profits			•
Spinoff/Startup companies			•
Individual consulting			•
Hardware/product development - for resale			•
Curriculum development – for resale			•

For additional questions, please email us at [SOLIDWORKS Research](#).



WE MAKE
YOU INNOVATE